

# Remnants of Civil War

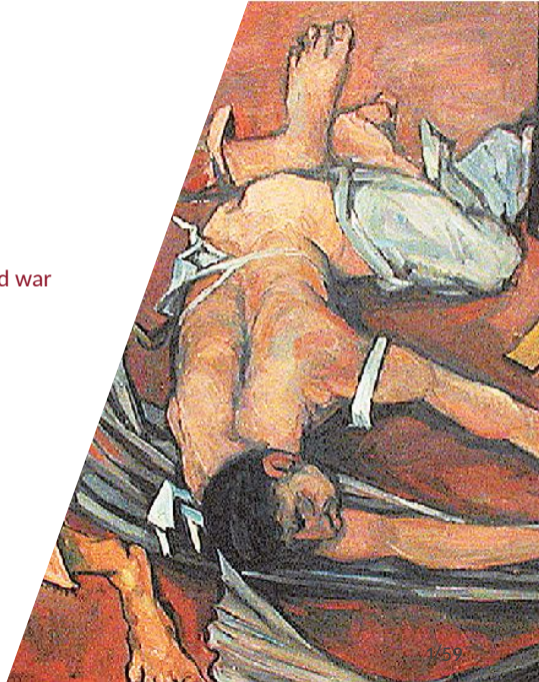
Immediate and long-run effects of electoral oppression in cold war

Greece

LSE - Hellenic Observatory

V. Logothetis (Uoloannina) & G. Melios (LSE)

19/03/24



# Table of Contents

## 1 Introduction

▶ Introduction

▶ Background

▶ Identification

▶ Measurement & Data

▶ Empirical

# Introduction

## 1 Introduction

We aim to (causally) investigate the state's response to communist party organisation in cold war Greece.

We focus on the 1961 elections to show that communist organisation led to violence and attempt to estimate the short-run political effects of these violent events.

In addition we investigate the effects of violence on current institutional trust, contemporary populist vote, economic activity, and public goods provision).

This presentation will go through the historical context, identification strategy, results so far, and future steps.

# Summary

## 1 Introduction

We employ an IV to:

- Document how random variation of radio broadcasting signals in Greek Municipalities helped the organisation of the communist/left parties and boosted their electoral results in 1958 (1st stage).
- We use this source of variation to isolate state's violent response in 1961 as a response to the electoral success of UDL (2nd stage).

We find that:

- there is a causal link between electoral success of EDA in 1958 and the level/probability of electoral oppression/violence experienced in 1961.
- Violence reduced EDA electoral results by about 8%
- The historical experience of electoral suppression is associated with lower contemporary levels of political trust.

# Table of Contents

## 2 Background

▶ Introduction

▶ **Background**

▶ Identification

▶ Measurement & Data

▶ Empirical

# Motivation

## 2 Background

We are motivated mainly by three strands of literature in History, Economics, and Political Sciences:

[History] - Extended historical evidence that the 1958 and 1961 elections were important:

# Historical Motivation

## 2 Background



# Motivation

## 2 Background

We are motivated mainly by three strands of literature in History, Economics, and Political Sciences:

[History] - Extended historical evidence that the 1958 and 1961 elections were important:

- In 1958 UDL becomes major opposition few years after the end of the Greek Civil War.
- In 1961 we have an state sponsored plan to suppress electoral vote across Greece (both urban and rural areas).
- The events following the 1961 electoral suppression have shaped the path of the Greek political history.



# Motivation

## 2 Background

We are motivated mainly by a growing literature in Economics, and Political Sciences on:

- How the spread of political propaganda (broadcasting TV & radio) affects elections.
- How state and non-state actors responded to the socialist/communist threats.
- How historical events continue to shape individuals' contemporary beliefs/behaviour

# Motivation: Econ Lit

## 2 Background

A large literature on the effects of radio television broadcasts and their effects:

- Enikolopov et al.(2011) focus on electoral effects of non-state television in 1999 Russian parliamentary elections.
- Gagliarducci et al. (2018) study the role of media in coordinating and mobilising the Italian partisans in Italy during WWII.
- Wang (2021) focuses on the electoral effects of populist Father Coughlin radio shows in the USA during the 30s.
- Olken (2009) investigates the impact of television and radio on social capital in Indonesia.

# Motivation: Econ Lit

## 2 Background

How states and non state actors responded to the socialist/communist threats:

- Acemoglu et al. (2020) document that the spread of the Mafia in Sicily at the end of the 19th century was in part caused by the rise of peasant socialist organisations threatening rural elites.
- Acemoglu et al. (2022) identify a strong link between surge of support for the Socialist Party after World War I and the subsequent emergence of fascism in Italy as measured by the presence of local fascist branches and fascist violent activities.

# Motivation

## 2 Background

We are motivated mainly by a growing literature in Economics, and Political Sciences on:

[Political Economy] - Large literature on

- How political messages affect party organisation (i.e. Wagner and Meyer, 2014)
- How voters respond to (the threat and use of) political violence (i.e. Prilleltensky and Gonick, 1996)
- How historical events affect contemporary attitudes, beliefs and behaviour (i.e. Michalopoulos and Papaioannou, 2020)

1947

Radio "Free Greece" starts broadcasting from the HQ of the Greek Dem Army in Belgrade

1949

- End of Greek Civil war
- Following Tito-Stalin breach radio moves to Bucharest in a covert operation

1951

United Democratic Left is founded

1954

Opposition makes the first "electoral wins" in the municipal elections

1956

- Karamanlis (right) elected prime minister
- Zachariadis is ousted in the 6<sup>th</sup> wide plenary session of KKE
- Radio stops its operation

1958

- New radio "Voice of Truth" starts broadcasting from new location in Leipzig
- UDL becomes major opposition a few months later

1961

- Elections characterized by fraud and suppression
- UDL loses a significant % of votes



# Clandestine Radio's Operation

## 2 Background

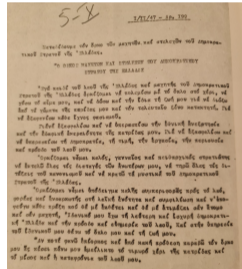
The evolution of how the clandestine radio operated provides interesting insights for our identification

- Covert operations as hosting countries did not want to appear intervening in Greece's political situation.
- Those involved operated under secrecy and extreme isolation.
- Texts were written under the supervision of KKE's politburo in Bucharest that was hosting the KKE (venue city of Cominform until its dissolution in 1956)
- Text was then transferred in East Germany, recorded and broadcasted.
- **Content significantly changed in 1958** (crucial for our identification)

# Content of station

## 2 Background

### Democratic Army Oath (1/2/47)

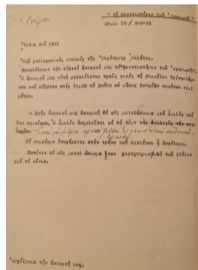


Source: ASKI in Psimouli V., (2006)

# Content of station

## 2 Background

### "Fighter's Tutorial" (5/8/50)



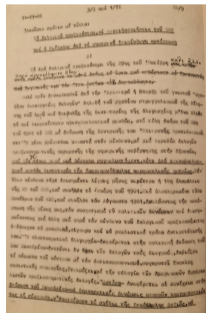
Source: ASKI in Psimouli V., (2006)



# Content of station

## 2 Background

### "Electoral Coup d'Etat" (14/11/61)

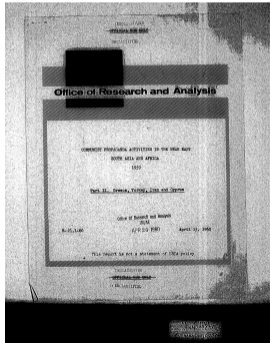


Source: ASKI in Psimouli V., (2006)

# Did the state know?

## 2 Background

The clandestine radio operations did not go unnoticed by Western counterintelligence and information agencies.



# Western Information Agencies-USIA

## 2 Background

-- Moderate increases in attributed Soviet Bloc radio programs in Greek, Turkish and Persian were overshadowed by the inauguration of a clandestine station broadcasting in Persian. The addition of this station meant that all three of the Western allies in the Near East were subject to clandestine broadcasts of Soviet Bloc origin attempting to capitalize on any evidence of internal dissatisfaction in these countries.

Source: Princeton University Library, Leo P. Crespi Papers

# Western Information Agencies-USIA

## 2 Background

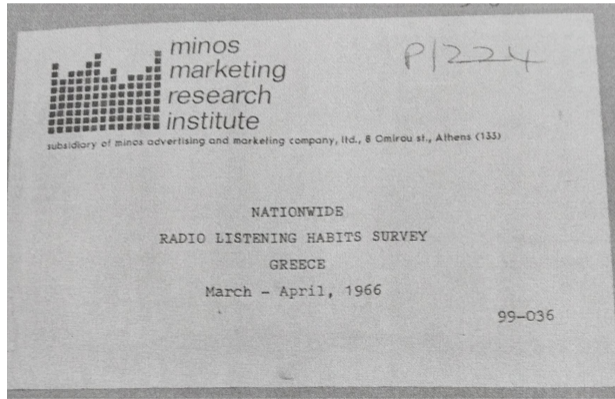
radio broadcasting. Broadcasts in Turkish actually increased only slightly during the year, from 66:30 hours per week to 70:20, reflecting minor augmentations in broadcasts from the Soviet Union and the European Satellites. Communist Chinese radio activity remained constant at an hour a day. The major changes in broadcasting hours in Persian, the total of which increased from 68:25 hours per week to 75:50, were a reduction in the Communist Chinese broadcasts but the inauguration in April of a clandestine station which purported to reflect Iranian sentiment within the country. The addition of this station meant that Greece, Turkey and Iran were now all subject to clandestine broadcasts: the Greek and Turkish stations are located in East Germany; the Persian station is in the Caucasus.

Only the Greek station was obviously the organ of the Communist Party, broadcasting the manifestos of the KKE Central Committee. On the other hand, Persian language broadcasts attributed to Berlin appeared to be under the direction of Tudeh exiles because of the rather frequent use of similar manifestos from the Tudeh Central Committee. The tone of all of these clandestine broadcasts was much more extreme than that of official Soviet Bloc radios. The worst vilification of the Shah came from the clandestine station in the Caucasus, and the name-calling pertaining to the Greek government emanating from the clandestine broadcasts in Greek was consistently more extreme than, say, the criticism of the Soviet radio.

Source: Princeton University Library, Leo P. Crespi Papers

# Did anyone listen?

## 2 Background



# Did anyone listen?

## 2 Background

TABLE 100. LISTENERSHIP TO FOREIGN STATIONS WHICH BROADCAST IN GREEK BY AGE (total)

	18-24	25-34	35-49	50 and over	
Base	710	1,051	1,351	888	= 4,000
	%	%	%	%	
Voice of America: Here is the Voice of the United States of America	24.4 17.5 <sup>11%</sup>	27.0 25.4 <sup>27%</sup>	27.8 27.6 <sup>36%</sup>	23.4 20.8 <sup>20%</sup>	= 1041
BBC: Here is London	5.1 3.6 <sup>18%</sup>	5.0 6.3 <sup>26%</sup>	5.3 2.8 <sup>15%</sup>	4.7 4.2 <sup>21%</sup>	= 203
Hungary: Here is Radio Station Budapest	14.9 10.6 <sup>25%</sup>	11.5 12.1 <sup>29%</sup>	9.5 12.8 <sup>31%</sup>	7.0 4.5 <sup>15%</sup>	= 417
USSR: Here is Moscow	7.0 20.2 <sup>29%</sup>	5.0 6.3 <sup>24%</sup>	5.4 7.3 <sup>33%</sup>	5.2 4.6 <sup>21%</sup>	= 222
West Germany: Deutsche Welle	3.1 2.2 <sup>16%</sup>	5.0 5.5 <sup>37%</sup>	3.3 4.5 <sup>32%</sup>	2.4 3.1 <sup>15%</sup>	= 141
Bulgaria: Sophia Speaking	10.1 7.2 <sup>24%</sup>	8.4 2.9 <sup>30%</sup>	6.7 9.0 <sup>30%</sup>	5.2 4.6 <sup>22%</sup>	= 296
Rumania: Here is Bucharest	8.7 6.2 <sup>25%</sup>	5.7 6.0 <sup>21%</sup>	5.8 7.8 <sup>32%</sup>	5.2 4.6 <sup>22%</sup>	= 346
Italy: Here is Rome	3.1 2.2 <sup>14%</sup>	3.3 3.5 <sup>32%</sup>	2.6 3.2 <sup>22%</sup>	2.1 1.9 <sup>17%</sup>	= 111
Albania: Tirane Speaking	7.3 5.2 <sup>27%</sup>	5.1 5.4 <sup>25%</sup>	3.8 5.0 <sup>27%</sup>	3.8 3.6 <sup>19%</sup>	= 191
France: ORTF Paris	3.4 2.8 <sup>20%</sup>	2.5 2.3 <sup>22%</sup>	1.4 1.9 <sup>14%</sup>	1.2 1.1 <sup>15%</sup>	= 20
Turkey: Radio Ankara	6.5 4.6 <sup>26%</sup>	6.2 4.5 <sup>25%</sup>	5.3 7.2 <sup>22%</sup>	5.2 4.6 <sup>22%</sup>	= 229
Other foreign stations	2.3	0.8	0.6	0.5	
Listen to none of above stations	56.9	57.8	57.5	58.4	
TOTAL	152.8	143.3	135.0	124.3	

# Table of Contents

## 3 Identification

▶ Introduction

▶ Background

▶ **Identification**

▶ Measurement & Data

▶ Empirical

# Identification Strategy

## 3 Identification

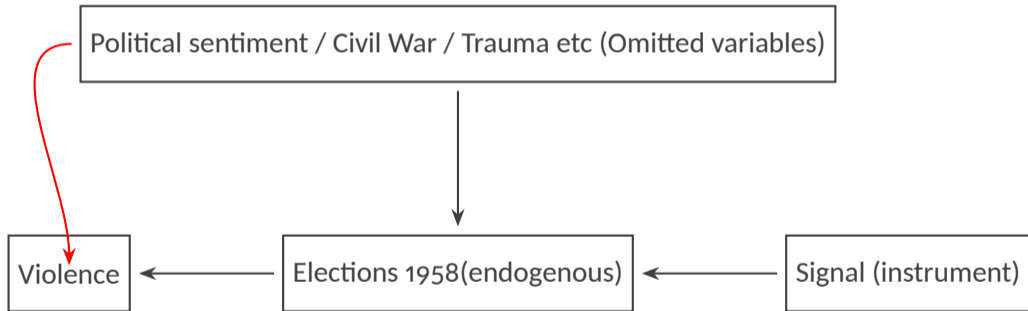
What is the state's response to communist organisation?

- Problem 1: Violence is endogenous
- Problem 2: Violence and election outcomes are highly spatially correlated



# Causal Diagram

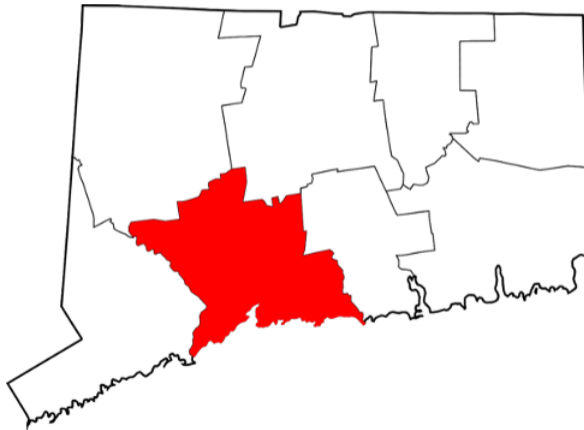
## 3 Identification



# Spatial Spillovers

## 3 Identification

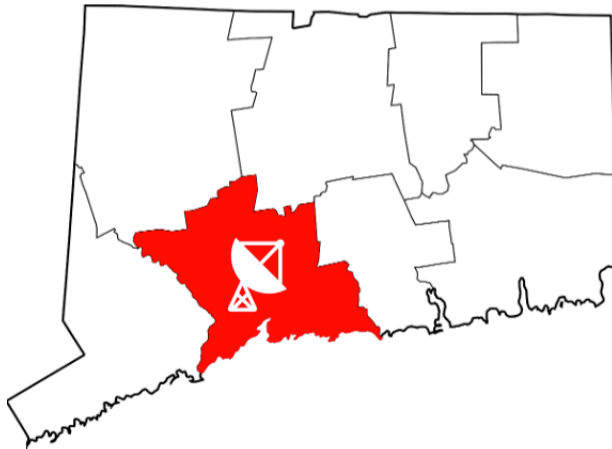
Let's take Municipality X for example to consider the spatial issue:



# Spatial Spillovers

## 3 Identification

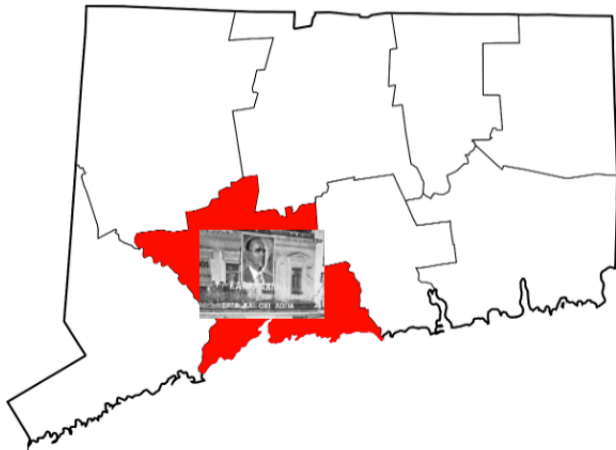
If broadcast signal in Municipality X is high:



# Spatial Spillovers

## 3 Identification

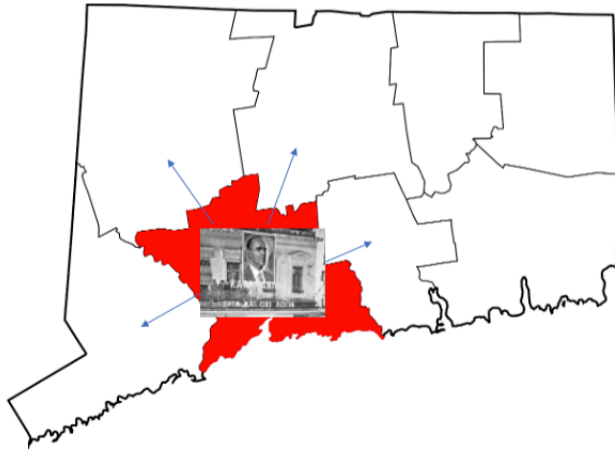
We expect higher results for EDA in 1958:



# Spatial Spillovers

## 3 Identification

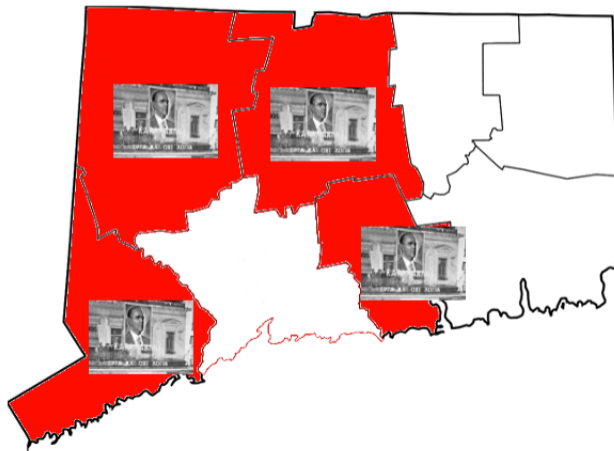
Which we expect to spread to neighbouring municipalities:



# Spatial Spillovers

## 3 Identification

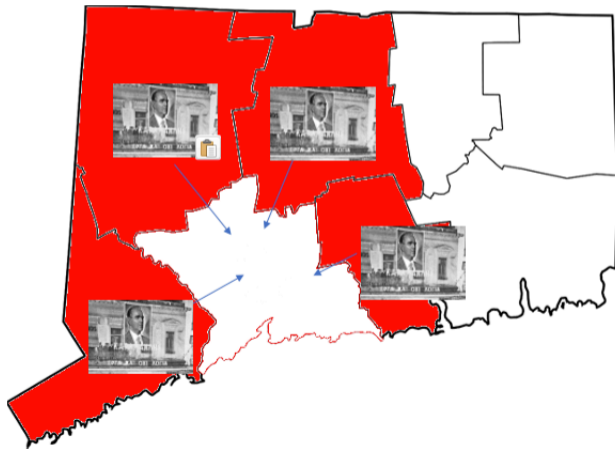
Which increases EDA results there:



# Spatial Spillovers

## 3 Identification

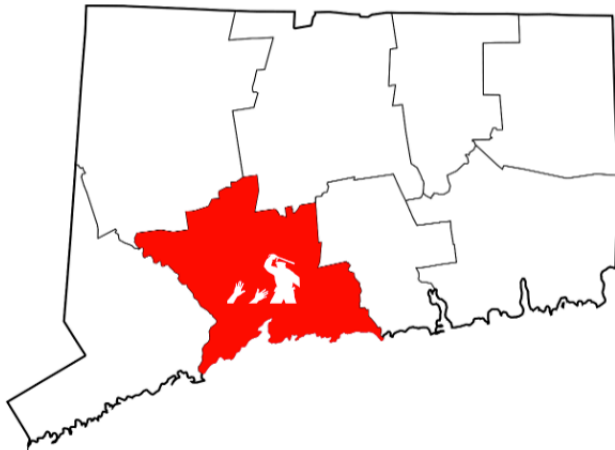
Which in turn spills back into Municipality X increasing EDA results more:



# Spatial Spillovers

## 3 Identification

We predict a higher rate of violence:





# Identification

## 3 Identification

### Problem 1: Protests are endogenous

Solution: Use signal as instrument for protesting activity

- Assumption 1.1: Broadcasting of KKE radio increases share of leftists in the Municipality which in turn increases violence
- Assumption 1.2: Broadcasting does not otherwise affect violence and election outcome in 1961 (Mellon, 2021)

### Problem 2: Voting behavior, violence, and broadcasting signal are spatially correlated

Violates assumption 1.2!

- Assumption 2.1: Outcomes and error terms are spatially correlated
- Assumption 2.2: Spatial dependencies depend on geographical distance between municipalities

# Table of Contents

## 4 Measurement & Data

▶ Introduction

▶ Background

▶ Identification

▶ **Measurement & Data**

▶ Empirical

# Radio Signal

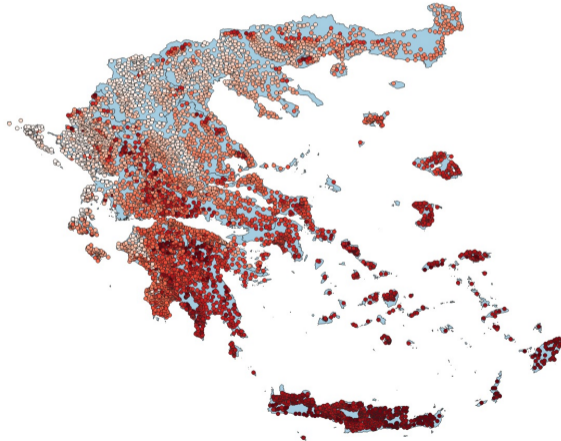
## 4 Measurement & Data

- We calculate signal transmission loss using the Irregular Terrain Model (Longley & Rice, 1968).
- The model is based on electromagnetic theory and on statistical analyses of both terrain features and radio measurements.
- It predicts the median attenuation of the radio signal as a function of distance and additional losses due to refractions at intermediate terrain obstacles.
- We deduct the transmission loss from the power of the transmitter to obtain the predicted signal strength for each location of interest.
- Data on transmitters location, strength & technical characteristics come from:
  - Online historical sources on radio stations and transmitters across Europe.
  - Psimouli V. (2006)

# Radio Signal across space

## 4 Measurement & Data

Predicted signal strength at village/city level (bins). Darker colors represent higher signal loss.



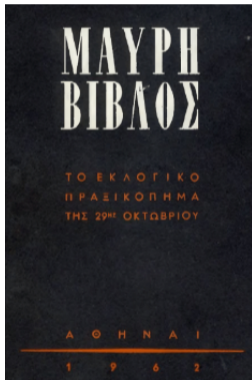
# Oppression Events

## 4 Measurement & Data

- After the election, EDA - United Democratic Left published a " Black Bible" documenting incidents of electoral oppression
- We code and geolocate all incidents reported up to the day before the elections
- Main estimation considers only verifiable events (name and place) - Robustness considers the universe of all reports
- Incidents include (often simultaneously):
  - Arrests
  - Physical Violence
  - Obstruction of electoral process
  - Intimidation
- Perpetrators are (often simultaneously):
  - Police/ Gerdamerie
  - Military & Paramilitary organisations
  - State actors (i.e. Mayors)

# Black Bible

## 4 Measurement & Data



# Data: Oppression Events

## 4 Measurement & Data

**ΧΑΝΙΑ** : Σήμερα το βράδυ οι υποψήφιοι κ.κ. Χατζηαγγελής και Μακρυγιαννάκης εξέχθησαν δολοφονικήν επίθεσιν με πέτρας έξω από το χωριό Άλικάμπος.

**ΦΩΚΙΣ** : Στο χωριό Πέντε Όρια, στην Άμφισσα, τρομοκράται επέτέθησαν με καρέκλας και ρόδες εναντίον των υποψηφίων. Τα αστυνομικά όργανα άνοιξαν τα τούρα προστατεύσασιν, απέχωρησαν επιδεικτικώς.

— (Καταγγελία του υποψηφίου Γ. Κατσίμπα).

**ΑΓΡΙΝΙΟΝ** : Ο τραμπούκος Καφρίτσας επέτέθη και έγραψε κόπησιν τον δάσκαλον του ΠΑΜΕ κ. Σταρχά.

**ΑΧΑΪΑ** : Στο χωριό Κούταλη Καλαβρύτων και ενώ οι υποψήφιοι κ.κ. Παπαστεριόπουλος και Γελέκος ώμιλουν εις συγγέντρωσιν 100 περίπου κατοίκων εντός του καφενείου, όμάς τρομοκρατών επέτέθη με πυροβολισμούς εναντίον τους. Οι σφαίρες έσπασαν τα τζάμια της εισόδου. Οι παρευρισκόμενοι πολίται κατεβήσαν τους τρομοκράτας, οι όποιοι έμεις έπληθην μετ' όλίγον και ήρξαν πάλιν να πυροβολήσιν.

21 Ό κ τ ω θ ρ ! ο υ

**ΛΑΚΩΝΙΑ** : Τρομοκράται έπυροδόλησαν την οικία του Χριστολάκου στον Κότρωνκ.

— Έπίσης τρομοκράται εξυλοκόπησαν άγρίως τον Σφαλαγγάκο, έξω από το χωριό Καρβελά.

# Data: Oppression Events

## 4 Measurement & Data

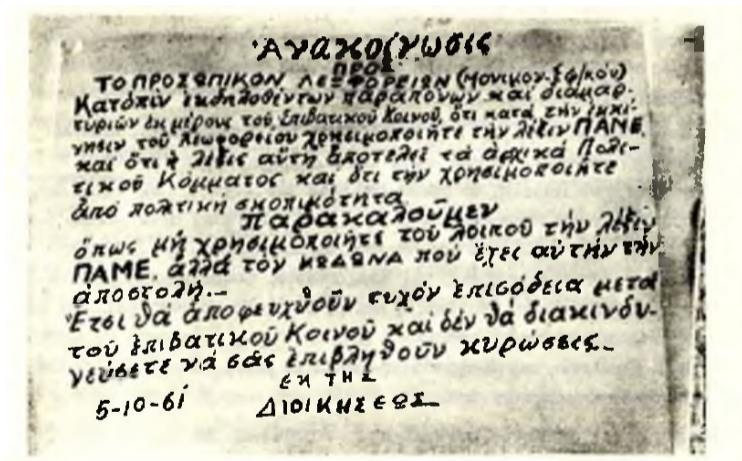
8 Ὀκτωβρίου

**ΑΘΗΝΑΙ :** Στοὺς Ἁγίους Ἀναργύρους συνελήφθησαν οἱ Γεώρ. Χριστόπουλος καὶ Τσιμέλης, διότι ὁ δεύτερος κατὰ τὴν διάρκεια τοῦ λόγου τοῦ κ. Τσάττου (ὑποψήφιου τῆς ΕΡΕ), εὐρισκόμενος πρὸ ἀπέναντι μπαλκόνι κρατοῦσε μὴ κότεα. Ἡ σύλληψις ἔγινε κατὰ γκαγκαστερικὸν τρόπον τὴν 11ην νυκτερινὴν μὲ κλίμακα 8 μέτρων, γιατί οἱ ἔνοικοι ἐρνήθησαν νὰ ἐπιτρέψουν τὴν νύκτα τὴν παραβίασι τοῦ οἰκογενειακοῦ τους ἀσύλου.



## Data: Oppression Events (a case not coded)

### 4 Measurement & Data



# Data: Oppression Events

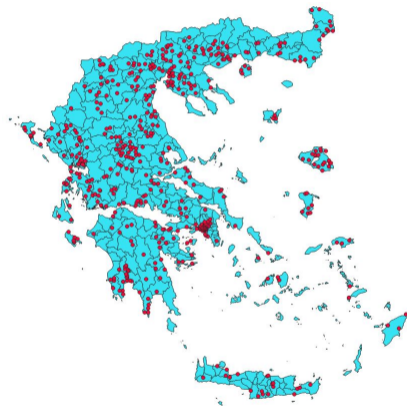
## 4 Measurement & Data

Violent Events based on our coding criteria

	Number
Number of Arrests	536
Number of Abuse Cases	461
Number of Intimidation Cases	650
Number of Victims	1688

# Data: Oppression Events

## 4 Measurement & Data



Distribution of Oppression Events (at least one). Source:EDA's Black Bible, authors calculations

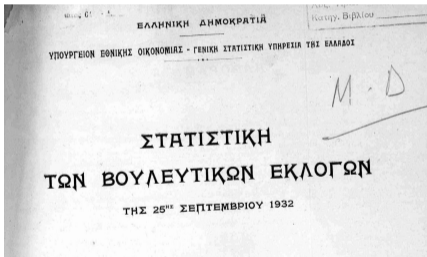
# Data: Electoral Results

## 4 Measurement & Data

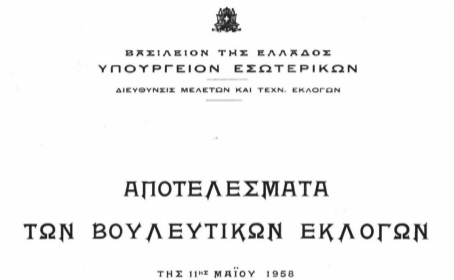
- We digitize and geolocate the following electoral results available at the digital library of Hellenic Statistical Authority:
  - 1932 (Hellenic Statistical Authority)
  - 1958 (Ministry of the Interiors)
  - 1961 (Ministry of the Interiors)
- For robustness purposes we also geolocate the 2004 electoral results (Ministry of the Interiors).

# Data: Electoral Results

## 4 Measurement & Data



1932 Electoral results. Source: ELSTAT.



1958 Electoral results. Source: Ministry of the Interiors

# Table of Contents

## 5 Empirical

▶ Introduction

▶ Background

▶ Identification

▶ Measurement & Data

▶ Empirical

# Radio Activity and Support for EDA

## 5 Empirical

- The first step is to analyze the relation between radio signal strength and EDA support in 1958. This is also the first stage when investigating the threat of left on electoral suppression.

$$\text{EDAShare}_i^{1958} = \beta \text{SignalFree}_i + \gamma \text{Signal}_i + \delta X_i' + \epsilon_i^{\text{firststage}} \quad (1)$$

- $\text{EDAShare}_i^{1958}$ : EDA vote share in 1958 at municipality  $i$ .
- $\text{SignalFree}_i$ : The hypothetical signal strength in free space. Controls for a municipality's proximity to the transmitter.
- $\text{Signal}_i$ : Actual signal strength.
- Once controlling for  $\text{SignalFree}_i$ , identification of the coefficient of  $\text{Signal}_i$  comes from variation in diffraction patterns caused by topographic obstacles along the signal transmission route.

# Radio Activity and Support for EDA

## 5 Empirical

- The set of covariates includes  $X_i'$ :
  - Prefecture (Nomos) fixed effects: We compare municipalities within the same prefecture.
  - Local geographic characteristics of the municipality (elevation).
  - Communist vote share in 1932 to control for the communist presence before the 1958 elections.
  - log registered voters.



# The effect of EDA Vote share in 1958 on 1961 electoral suppression

## 5 Empirical

- Our main results analyze the effect of EDA's success in 1958 on the voting suppression just before 1961 elections.

$$y_i^{1961} = \beta \text{EDAShare}_i^{1958} + \gamma_y^{IV} X_i' + \epsilon_i^{IV} \quad (2)$$

- Dependent vars: We use 5 measures of electoral suppression:
  - If any type of event occurred (dummy).
  - If at least one arrest occurred (dummy).
  - If at least one abuse event occurred (dummy).
  - Sum of events.
  - Number of victims per registered voters.
- Excluded instrument: Signal strength
- Covariates: as before.

# Results

## 5 Empirical

### Baseline IV Regression

	Event	Arrest	Abuse	Tot. Events	Number of Victims
Eda share 1958	0.861** (0.430)	0.292 (0.272)	0.948*** (0.318)	0.004*** (0.001)	0.004** (0.010)
Nomos FE	Yes	Yes	Yes	Yes	Yes
Controls Geo	Yes	Yes	Yes	Yes	Yes
N	4.230	4.230	4.230	4.230	4.230
F-Stat	24.627	24.627	24.627	24.627	24.627
Free Space loss	Yes	Yes	Yes	Yes	Yes

1 st. dev increase in EDA share in 1958% (0.14) increases the probability of having an event in 1961 by 12%

# Results

## 5 Empirical

Controlling for past KKE

	Event	Arrest	Abuse	Tot. Events	Number of Victims
Eda share 1958	1.642*** (0.4949)	0.441 (0.3862)	1.534*** (0.3865)	0.004*** (0.0014)	0.005** (0.0023)
Nomos FE	Yes	Yes	Yes	Yes	Yes
Controls Geo	Yes	Yes	Yes	Yes	Yes
Controls 1932	Yes	Yes	Yes	Yes	Yes
N	1.727	1.727	1.727	1.727	1.727
F-Stat	31.598	31.598	31.598	31.598	31.598
Free Space loss	Yes	Yes	Yes	Yes	Yes

1 st. dev increase in EDA share in 1958 (0.14) increases the probability of having an event in 1961 by 22.4%

# First Stage

## 5 Empirical

First Stage results

	EDA 1958	ERE 1958	EDA 1958	ERE 1958
Signal	0.001** (0.0002)	-0.0004 (0.0003)	0.0016** (0.0003)	-0.0005 (0.0005)
Nomos FE	Yes	Yes	Yes	Yes
Controls 1932	No	No	Yes	Yes
Controls Geo	Yes	Yes	Yes	Yes
N	4.230	4.230	1.727	1.727
R <sup>2</sup>	0.026	0.019	0.40	0.30

# The effect of EDA Vote share in 1958 on 1961 electoral suppression

## 5 Empirical

- The *exclusion restriction* is based on two premises:
  - Signal strength should be uncorrelated with municipality characteristics (conditional on covariates) impacting voting patterns. ->Our *instrument is exogenous*.
  - The effect of signal strength should be fully captured by the vote share of UDL in 1958. ->We *examine the reduced form relationship between signal strength and electoral op-pression and we find no evidence when restricting our sample to where UDL received no votes at all (both if 1958 and 1932 elections are considered)*.

# Robustness Checks

## 5 Empirical

Results remain significant even when we check for:

- Spatial autocorrelation (Druker et al. 2017)
- Placebo Elections (1932, 2004)
- Placebo signals (Fictitious Signal from Turkey/Moscow)

# Long term trust

## 5 Empirical

We use data from the European Quality of Government Index at LAU 2 (zipcodes) level between 2010-2021 (4 waves):

- 2.000 individuals per wave
- 2010, 2013, 2017, 2021 (pooled)
- Perceptions about institutions (Scale 1-10):
  - Local Government
  - National Government
  - Corruption
  - Police
  - Army

# Results

## 5 Empirical

### Long term Trust

	Local Gov	National	Police	Army	Corruption
Violence 1961	-0.0617*** (0.0002)	-0.0810*** (0.0002)	-0.091** (0.0002)	-0.00002 (0.0002)	-0.0000 (0.0002)
Nomos FE	Yes	Yes	Yes	Yes	Yes
Controls	Yes	Yes	Yes	Yes	Yes
Wave FE	Yes	Yes	Yes	Yes	Yes
N	7420	7420	5360	6298	7420

- Effect is only driven by people on the left
- Effect is stronger for >55 years old



# Future Steps

## 5 Empirical

Currently working on:

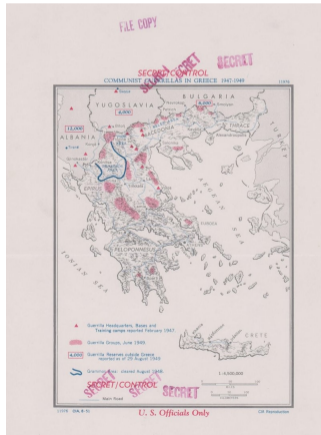
- Public goods provision (*Road construction -> Michelin Maps*)
- Licensing (*licences to do business were administered by local police*)
- Digitising census data for controls

# Future Steps

## 5 Empirical

Currently working on:

- Control for civil war experience (*digitize CIA map depicting guerilla activities*)



# Remnants of Civil War *Thanks*